

A Strategy for Delivering Building Safety

02/12/2021

Neil Yeomans
neil.yeomans@orbit.org.uk

**“The government is
bringing about the
biggest change in
building safety for a
generation”**

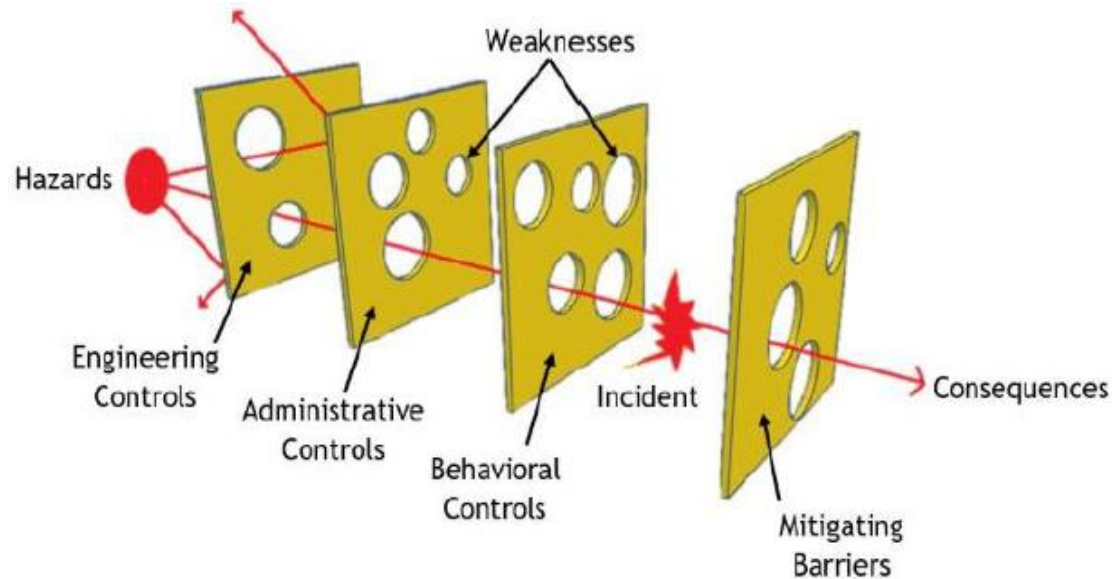
Housing Secretary Rt Hon Robert
Jenrick MP, 2020



Traditional “Compliance” Cycle

Mind Set Change - Swiss Cheese Model

Managing risk, not managing compliance

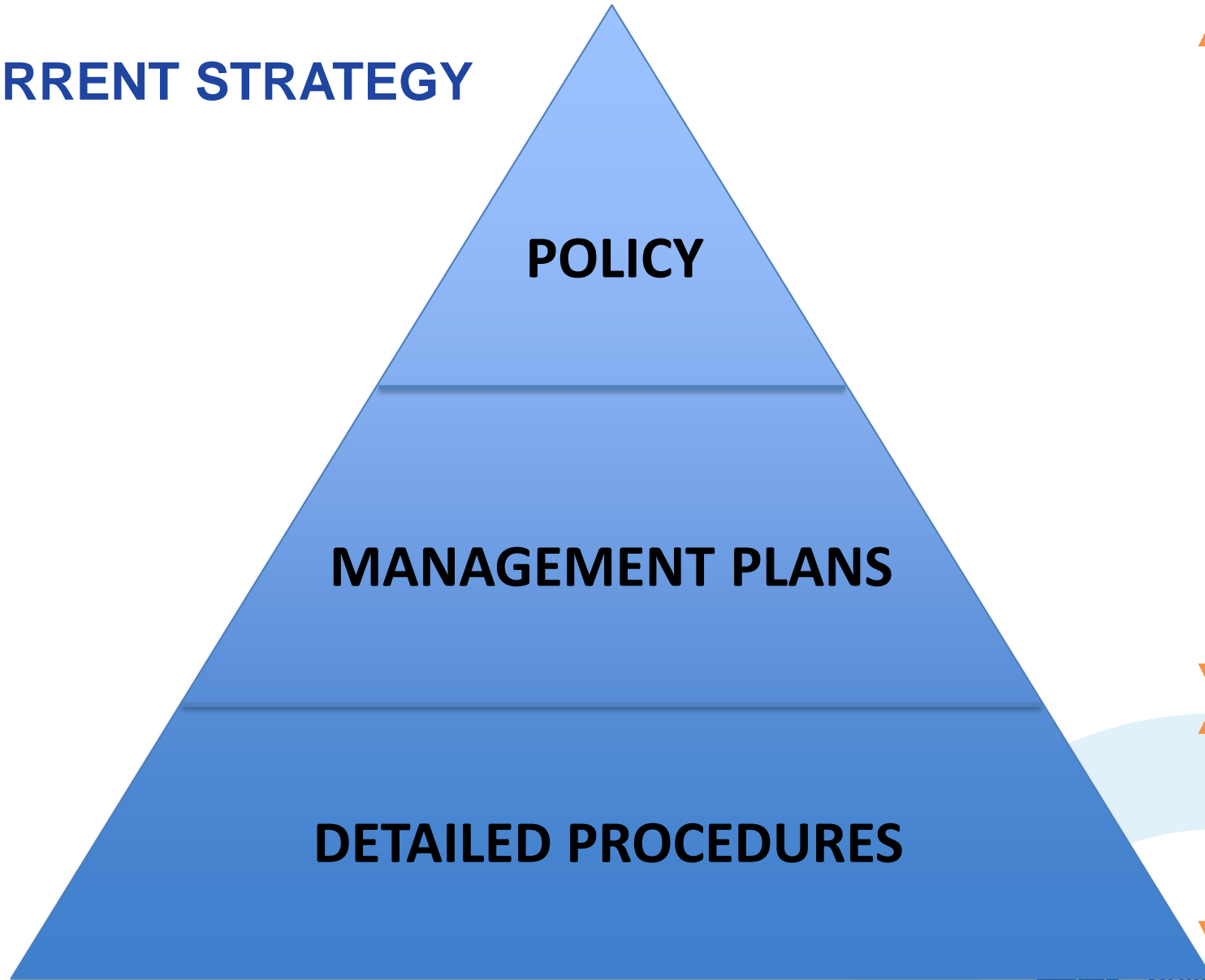


Strategic Exam Questions



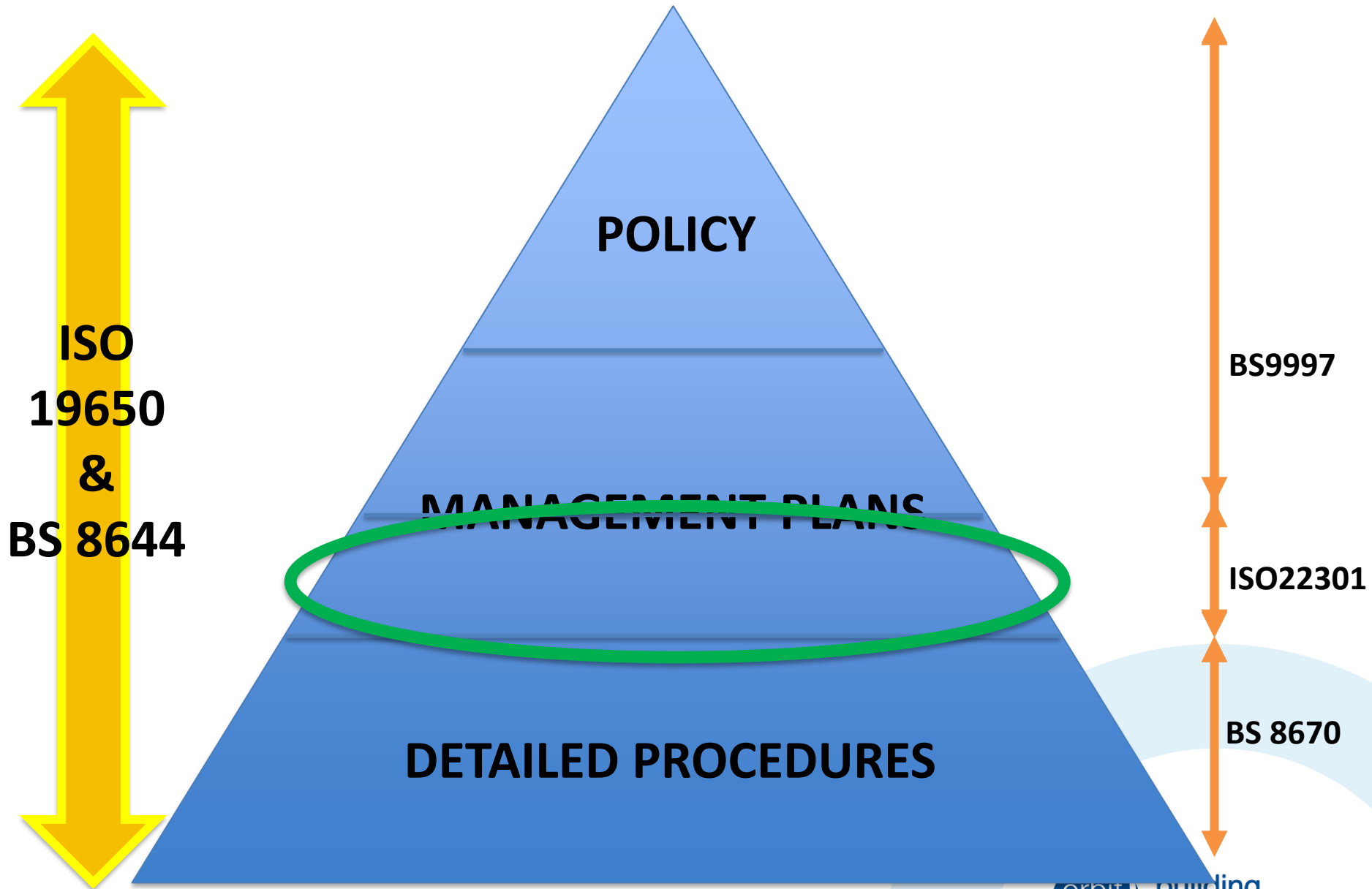
- 1. How do we focus our resources on the in-scope buildings whilst avoiding a two tier system between in-scope and out of scope buildings?**
- 2. How do we judge the pace of change, considering law/guidance hasn't been released yet?**
- 3. How will we ensure we have the right competency levels in a high demand area?**

CURRENT STRATEGY

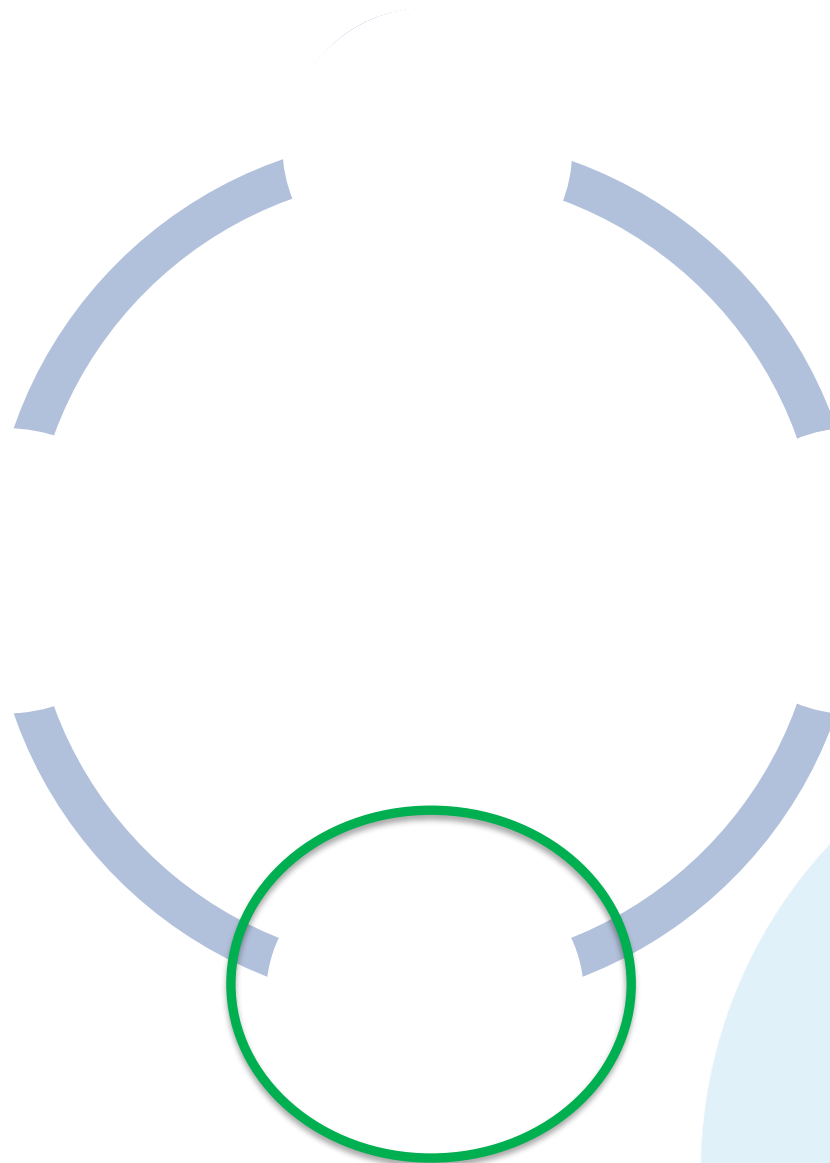


BS9997

SKEB



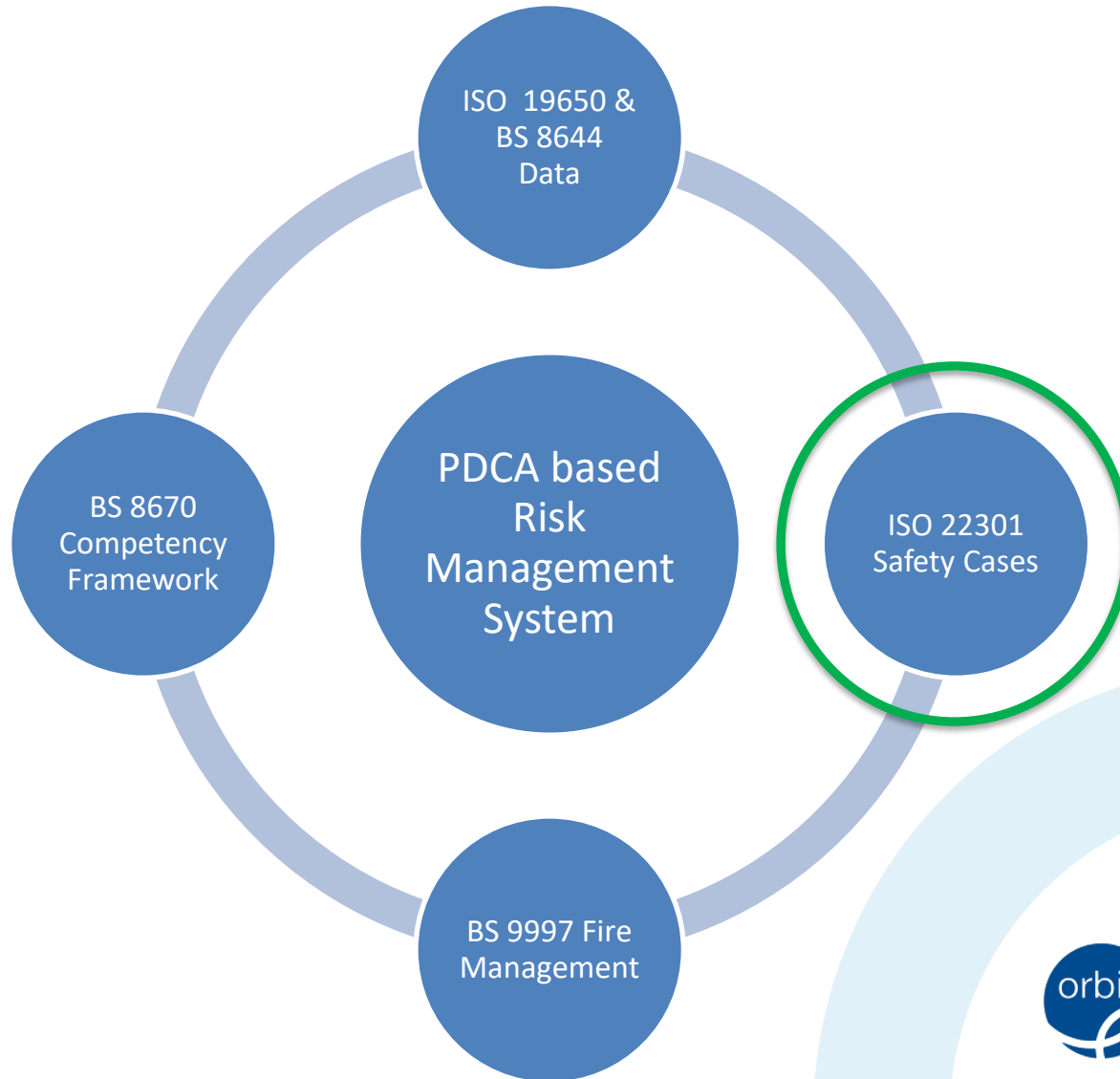
Strategic Lodestone Standards



What is BS9997?

- It is the 'Gold Standard' for fire risk management in the UK
- It was developed as the result of the Rose Park fire tragedy in Scotland.
- It is designed to appreciate that managing fire safety across a large stock is very different to managing fire safety in a single building – it looks at the swiss cheese model specifically for fire.
- It is based around the Plan, Do, Check, Act Cycle
- We already have BS9997 accreditation!

Strategic Lodestone Standards



What is ISO 22301?

- **Internationally recognised standard for resilience.**
- **It is specifically designed to anticipate potential disasters and to identify the potential impact**
- **It then provides a framework to minimise the risk of the disaster happening**
- **It then also provides a framework for disaster recovery, in the event the disaster occurs.**
- **BS 9997 has elements of this, however, following a Gap analysis, we have identified that ISO 22301 contains 121 additional requirements above and beyond BS9997.**

Ring Fencing = Trickle-down Methodology

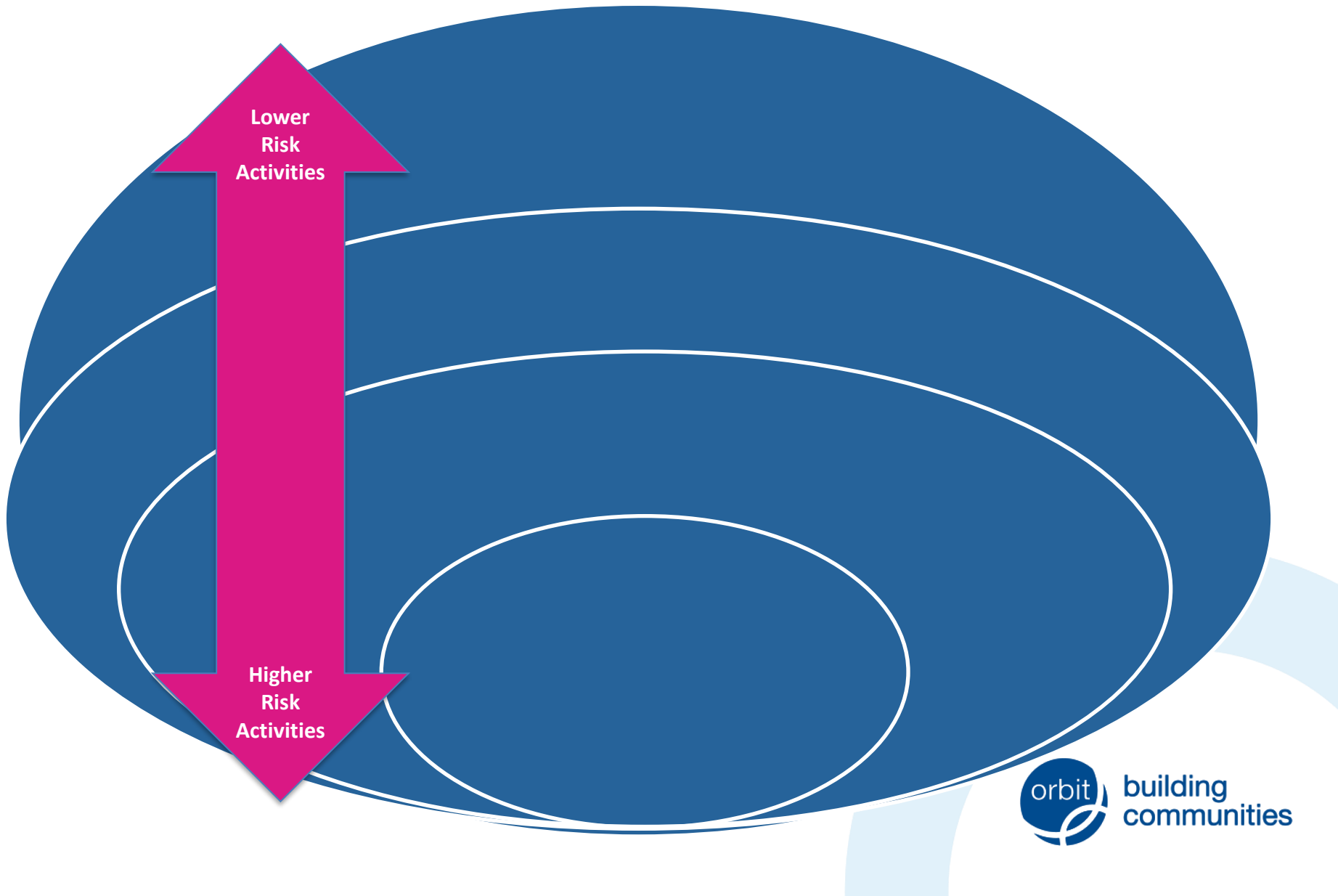


- Methodology/Technology used on in-scope buildings may be used on lower risk buildings where no additional staff nor budget is required
- Methodology/Technology used on in-scope buildings, which requires additional resource will be subject to a business case to show the methodology provides us a commercial benefit

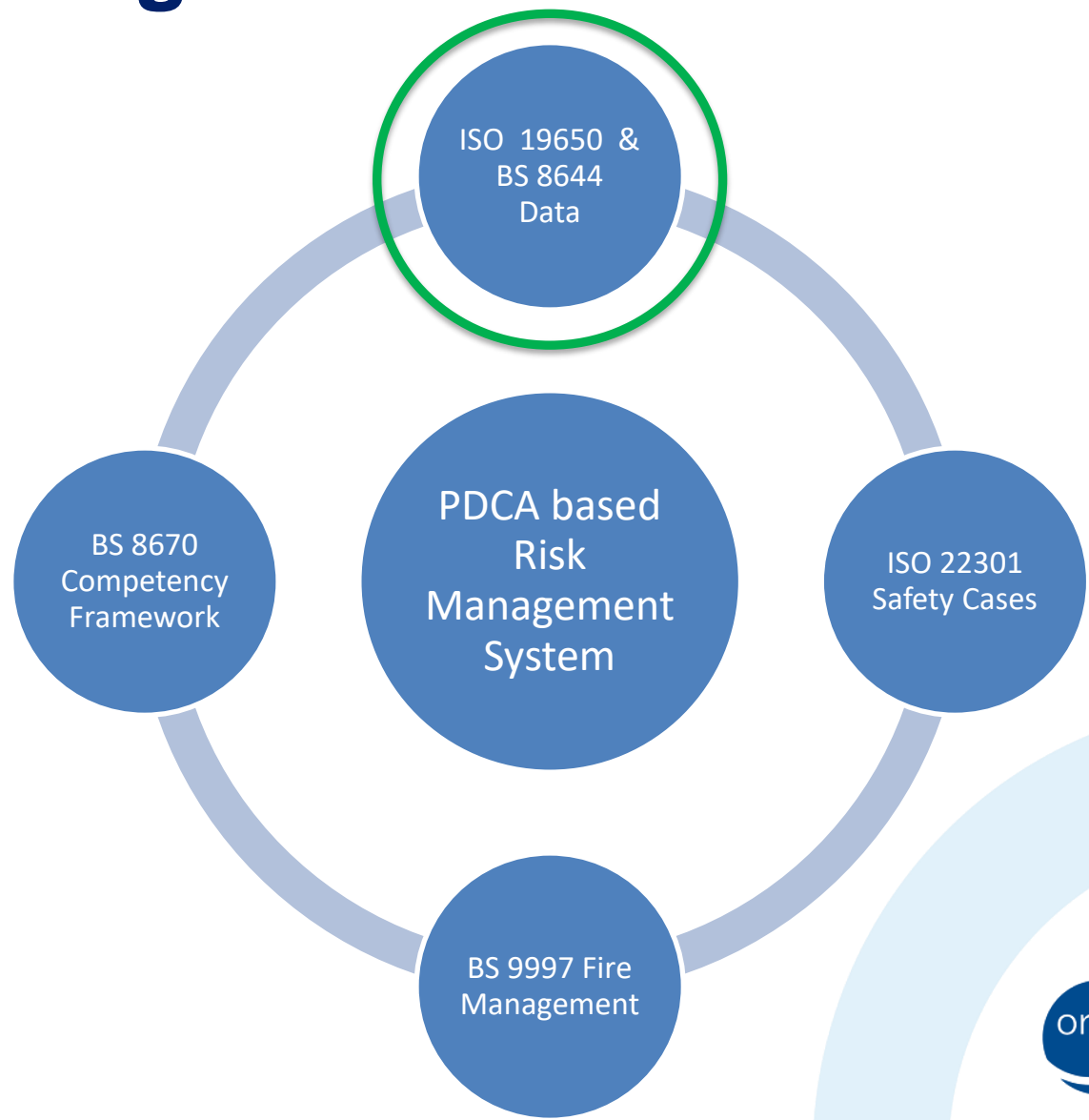
Strategic Lodestone Standards



The Right People, Making the Correct Decision



Strategic Lodestone Standards



What is ISO 19650?

- It is the internationally recognised standard for implementing BIM level data management (BIM = Building Information Management)
- It is a methodology that leads us by the hand to identify:
 1. What data we need
 2. Where the data is held
 3. How we keep it up to date
 4. How we exchange

“Changes to the regulatory regime will help, but on their own will not be sufficient **unless we can change the culture away from one of doing the minimum required for compliance,** to one of taking ownership and responsibility for delivering a safe system...”



Hackitt Interim report Page 6

